

Japan's Urban Railway Systems

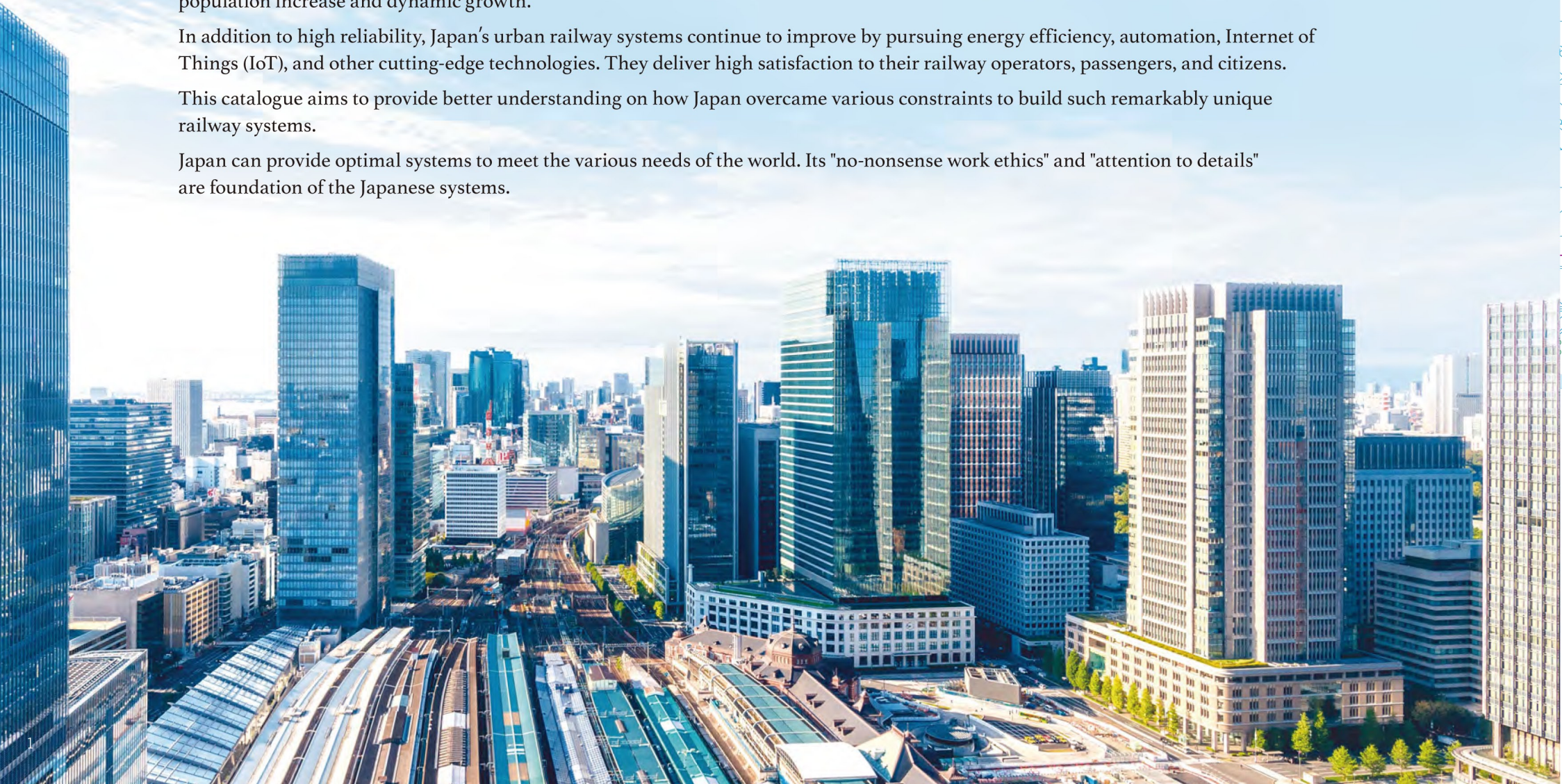
The most striking characteristic of Japan's urban railways is their absolute safety, reliability, punctuality, and high-frequency operation. They are mass transportation systems unmatched by others.

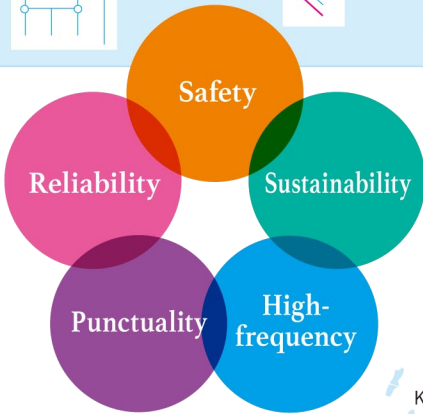
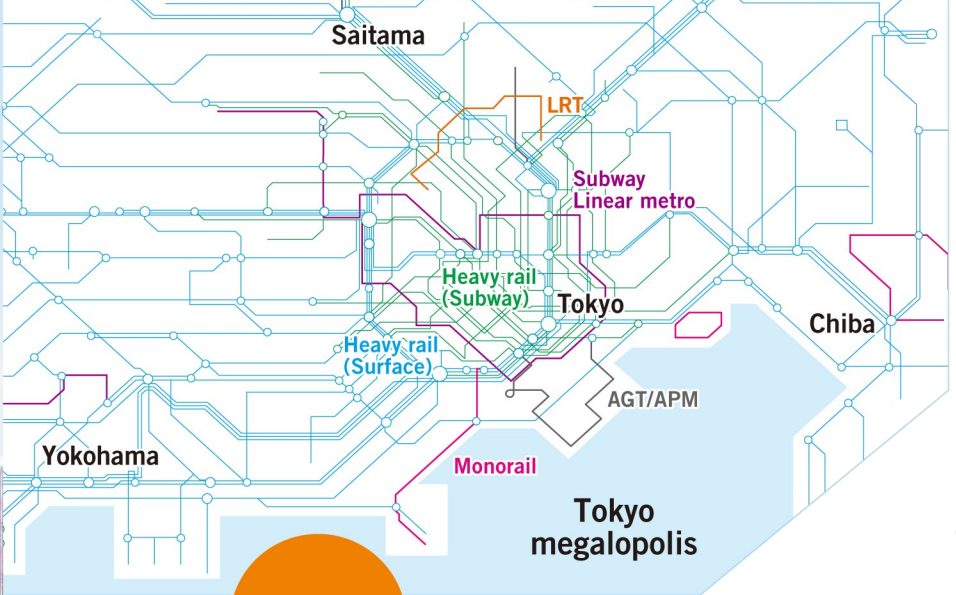
As urbanization advances, such urban infrastructure function is much desired in many parts of the world that are experiencing population increase and dynamic growth.

In addition to high reliability, Japan's urban railway systems continue to improve by pursuing energy efficiency, automation, Internet of Things (IoT), and other cutting-edge technologies. They deliver high satisfaction to their railway operators, passengers, and citizens.

This catalogue aims to provide better understanding on how Japan overcame various constraints to build such remarkably unique railway systems.

Japan can provide optimal systems to meet the various needs of the world. Its "no-nonsense work ethics" and "attention to details" are foundation of the Japanese systems.





Overview of Japan's Railway Systems (2014)

Operators	Items	Length of route operated (km)	Passenger (in millions / year)	Passenger-kilometers (in millions / year)
The Japan Railway Group (6)		20,022.0*	9,088	260,106
Private railways (21)		3,022.4	10,253	123,008
Public railways (11)		614.7	3,262	19,227
Others (162)		4,191.9	1,257	10,429
Total (200)		27,851.0	23,860	412,770

* Note : including Shinkansen Source : "数字でみる鉄道2016" (Fact Sheets of Passenger Railways 2016)

Urban Transport Systems in Major Cities

City	Population (thousands)	Heavy rail (Surface)	Heavy rail (Subway)	Linear metro	Monorail	AGT/APM	LRT	HSST	Length of route operated*
Tokyo megalopolis									
Tokyo Metropolitan Districts	9,385	●	●	●	●	●	●		749.3
Chiba	973	●			●	●			91.9
Saitama	1,281	●	●			●			93.3
Yokohama	3,731	●	●	●		●			260.6
Nagoya megalopolis									
Nagoya	2,307	●	●					●	247.0
Kansai megalopolis									
Osaka	2,703	●	●	●	●	●	●		324.9
Kyoto	1,474	●	●				●		204.3
Kobe	1,535	●	●	●		●			207.9
Other areas									
Sapporo	1,959	●	●				●		107.1
Sendai	1,084	●	●	●					128.1
Okayama	721	●					●		145.4
Hiroshima	1,194	●				●	●		157.0
Matsuyama	516	●					●		62.3
Kitakyushu	955	●			●				105.4
Fukuoka	1,556	●	●	●					151.4
Kumamoto	740	●					●		82.0
Kagoshima	599	●					●		120.7

* Note : Length of route operated : "平成24・25年度版 地域交通年報" (Fact Sheets of Regional traffic in 2012-2013)